



**HawtonFloor®**  
Raised Floor of Innovation



APPLICATION DATA CENTER / COMPUTER ROOM

HAWTONFLOOR® - 'ANTI-STATIC HIGH PRESSURE LAMINATE'

*We are not producing products, we are producing values for you*



## Specification Details

Panel Type HAWTON® Anti-static High Pressure Laminate

### Description of 'Anti-static High Pressure Laminate'

High pressure laminate(HPL) is produced with original kraft paper, in accordance with the EN 438 Class W2. It's an ideal application in floors for which high surface wear is necessary, and it's the best use in the construction of access floors which can be installed on all types of floor, such as steel raised panel, calcium sulphate panel, woodcore panel, aluminum panel, etc. The surface of laminate is non-toxic, chemically inert and non allergenic.

### Characteristics

- Special anti-static properties
- Excellent resistance to scratching
- Excellent reaction to fire with low fume-generation
- Easy to clean and maintenance
- Excellent resistance to damp and static load resistance
- Excellent resistance to high temperatures, including those of cigarette burns
- Excellent resistance to wear and tear
- Excellent resistance to impact
- Excellent chemical resistance
- Good dimensional stability



HT-7101



HT-7102



HT-7103



HT-7104



HT-7105



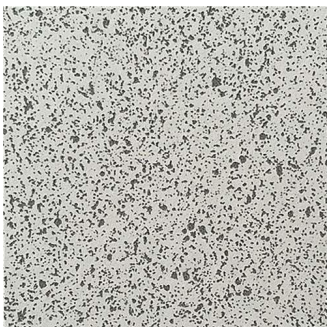
HT-7106



HT-7107



HT-7108



HT-7109



HT-7110



HT-7111



HT-7112

*For more color and patterns, please contact our sales*

## Test Parameters

	Specification	Test Standard	HT® Anti-static High Pressure Laminate
FLOOR CLASSIFICATION	Type of Floor Covering	EN649	Anti-static HPL
		ASTM F 1700	Class III - Type B, High Pressure Laminate
		NFPA Life sfty code 101	Class 1 - Interior Floor Finish
		NFPA 99 Standard for health care facility	Meets Standard
	Floor Classification (Wear rating / Static load resistance)	EN 685	Commercial: 34 / Industrial: 43
No of Color		12	
PHYSICAL FEATURES	Tile Dimension Size	EN 42790° Press Cutting	600×600 / 610×610
		ASTM F 536: Size Tolerance (<±0.4mm / 305mm)	< ±0.4mm / 305mm
	Dimensional Stability	EN 434 /FED STD NO. 501a, M 6211	< 0.25%
		ASTM F 540: Square Tolerance (<0.51mm / 305mm)	< 0.51mm / 305mm
	Wear Layer Thickness	EN 429	0.30mm
	Inter Layer		Print flim
	Total Thickness	EN 428	1.20mm
		ASTM F 386: Thickness Tolerance (±0.13mm)	Meets Standard
	Weight / m2	EN 430	1.20mm: 0.5 kg/m2
	Wear Resistance (Abrasion / Thickness Loss)	EN 660-1	< 0.08mm
		EN 649	Group T
		ASTM D 4060 (CS-17 Wheel, 1,000 g, 1,000 cycles)	70mg
	Hardness	ASTM D 2240 (Type D)	67
	Residual indentation	EN 433 / Din 51955	<0.04mm
		ASTM F 1914 (<8%)	<8%
	Static Load Limit	ASTM F 970	3,000 lbs/square inch; Long term
	Flexibility	ASTM F 137	No Crack or Breaking
Castors Wheel test	EN 425	No Damage	
ELECTRICAL FEATURES	Electrical Resistance	DIN 51953 / EN 1081	Anti-static 109 < R < 1012
		ASTM F 150 / ESD F 7.1 / UL 779	Anti-static 1.0×109 ~ 1.0×1012

<b>FIRE RESISTANCE</b>	Critical Radiant Flux	ASTM E 648 / NFPA 253	Class 1 (1.08 w/cm <sup>2</sup> )
	Flame Spread	ASTM E 162 / ASTM E 84 / NFPA 225	NFPA Class B / UBC Class II (<75)
	Smoke Density	ASTM E 662 / NFPA 258	Passed (<450Dme)
	Thermal Conductivity	DIN 52612 / NFX 10021	0.309 w/m.k
	Underfloor Heating	DIN 52612	Suitable - Max 30°C
ASTM F 1514 ( $\Delta E < 8$ ave, max)		< $\Delta E = 8.0$	
<b>CHEMICAL RESISTANCE</b>	Chemical Resistance	EN 423 / DIN 51958	Excellent; Test Report available on request
		ASTM D 543 / ASTM F 925	Excellent; Test Report available on request
<b>SLIP RESISTANCE</b>	Slip Resistance Wet	DIN 51130 / BGR181 (ZH1 / 571)	R9
		ADA Requirements	> 0.6
		prEN 13893	0.89
	Slip Resistance Dry	EN 13893	> 0.3
<b>LIGHT RESISTANCE</b>	Color Fastness	EN 20105-B 02	> 6
		ISO 105 B 02, Met. 3 - DIN53389	7
	Resistance to Light	ASTM F 1515 ( $\Delta E < 8$ ave, max)	< $\Delta E = 8.0$
<b>OTHER PROPERTIES</b>	Impact Sound Reduction	ISO 717 / 2	4 dB
	Sound Absorption	ISO 140-8 / ISO 717	3 dB
	Water Absorption	ASTM D 570	0.03% water weight gain
	Ease of Decontamination	DIN 25415-1 / ISO 8690	Excellent
	Recyclable		Yes
	Formulation		High Pressure Laminate Static Control HPL